



MARLE

CAT NO. 1500



STANDARD
100



COLOURWAYS



1500-01

SUITABLE FOR: Drapery & Soft Upholstery  

COMPOSITION: 77% Poly, 23% Cotton

WIDTH: 140 CMS (+/- 5 CMS)

WEIGHT: 230 GSM

VERTICAL DESIGN REPEAT: Nil

HORIZONTAL DESIGN REPEAT: Nil

WASH CARE:    

(Machine wash at cold. Gentle cycle. Tumble dry low. Do not bleach. Dry clean.)



1500-06



1500-10



1500-14



1500-18



1500-22



1500-26



1500-29



1500-33



1500-35

*Colour shades may tend to vary between different dye-lots & production batches.
*Due to variations in computer screens, images presented are not 100% similar to actual fabrics.



1500-02

SUITABLE FOR: Drapery & Soft Upholstery  

COMPOSITION: 77% Poly, 23% Cotton

WIDTH: 140 CMS (+/- 5 CMS)

WEIGHT: 230 GSM

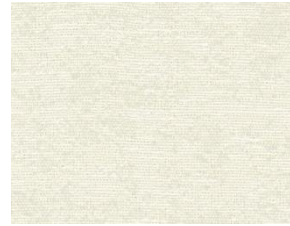
VERTICAL DESIGN REPEAT: Nil

HORIZONTAL DESIGN REPEAT: Nil

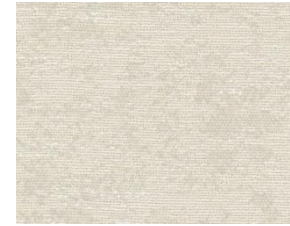
WASH CARE:    

(Machine wash at cold. Gentle cycle. Tumble dry low. Do not bleach. Dry clean.)

COLOURWAYS



1500-07



1500-11



1500-15



1500-19



1500-23



1500-27



1500-30



1500-34



1500-36



1500-37

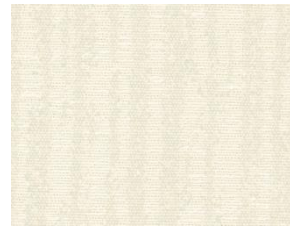
*Colour shades may tend to vary between different dye-lots & production batches.

*Due to variations in computer screens, images presented are not 100% similar to actual fabrics.

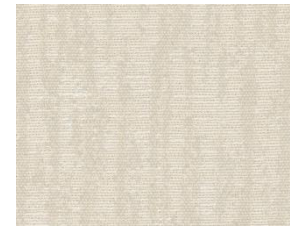
COLOURWAYS



1500-03



1500-08



1500-12



1500-16



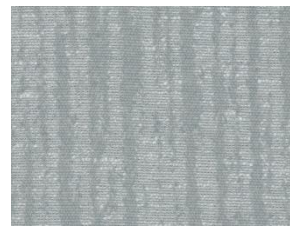
1500-20



1500-24



1500-28



1500-31

SUITABLE FOR: Drapery & Soft Upholstery  

COMPOSITION: 77% Poly, 23% Cotton

WIDTH: 140 CMS (+/- 5 CMS)

WEIGHT: 230 GSM

VERTICAL DESIGN REPEAT: Nil

HORIZONTAL DESIGN REPEAT: Nil

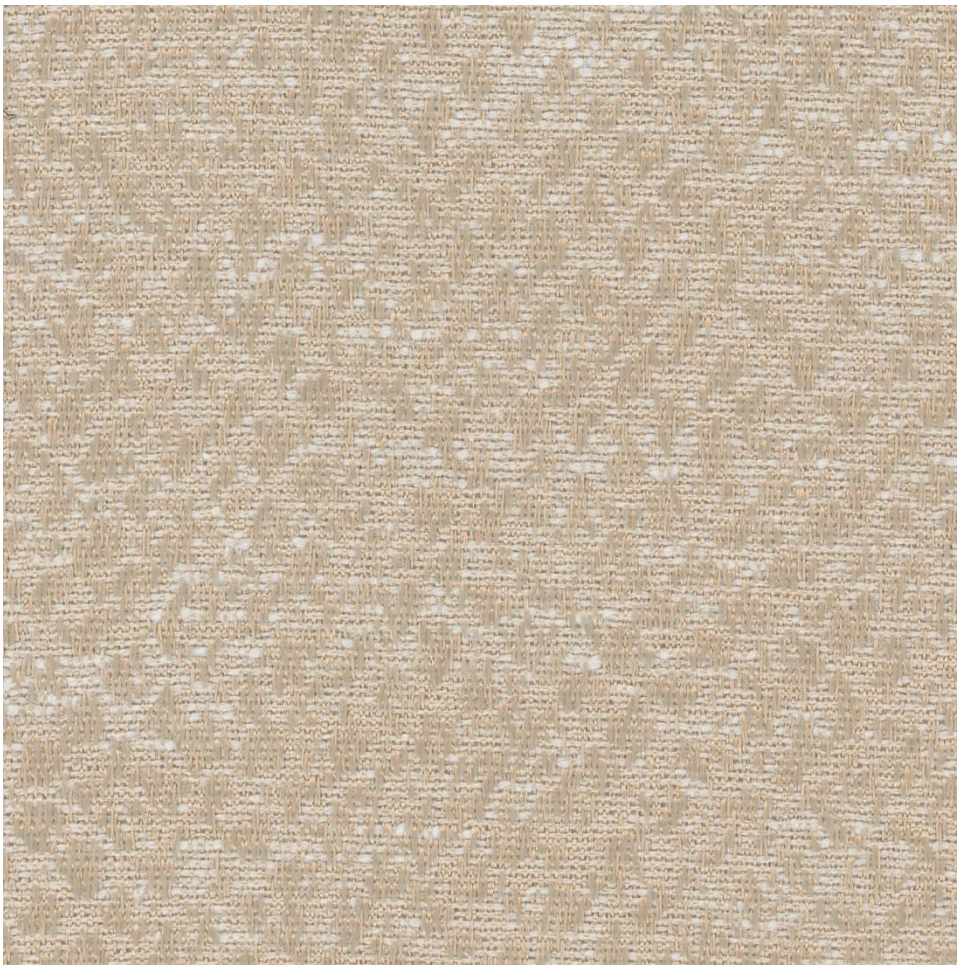
WASH CARE:    

(Machine wash at cold. Gentle cycle. Tumble dry low. Do not bleach. Dry clean)

*Colour shades may tend to vary between different dye-lots & production batches.

*Due to variations in computer screens, images presented are not 100% similar to actual fabrics.

COLOURWAYS



1500-04

SUITABLE FOR: Drapery & Soft Upholstery  

COMPOSITION: 77% Poly, 23% Cotton

WIDTH: 140 CMS (+/- 5 CMS)

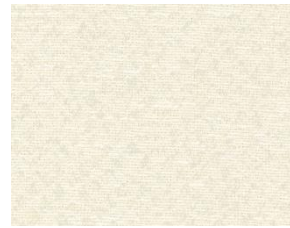
WEIGHT: 230 GSM

VERTICAL DESIGN REPEAT: Nil

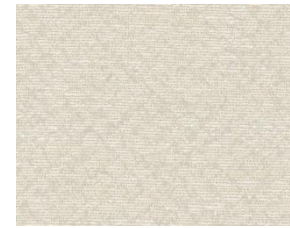
HORIZONTAL DESIGN REPEAT: Nil

WASH CARE:    

(Machine wash at cold. Gentle cycle. Tumble dry low. Do not bleach. Dry clean.)



1500-05



1500-09



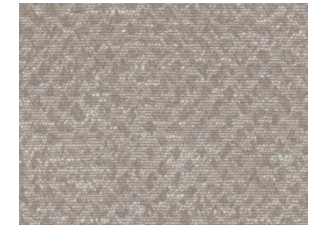
1500-13



1500-17



1500-21



1500-25



1500-32

*Colour shades may tend to vary between different dye-lots & production batches.
*Due to variations in computer screens, images presented are not 100% similar to actual fabrics.



VALUE WEAVES

by ULTRA FABRICS®

Unit 262, Dubai Textile City
Al Warsan 1, Dubai, UAE

Follow our socials
@ultrafabrics.ae
   

www.valueweaves.ae