



NEST

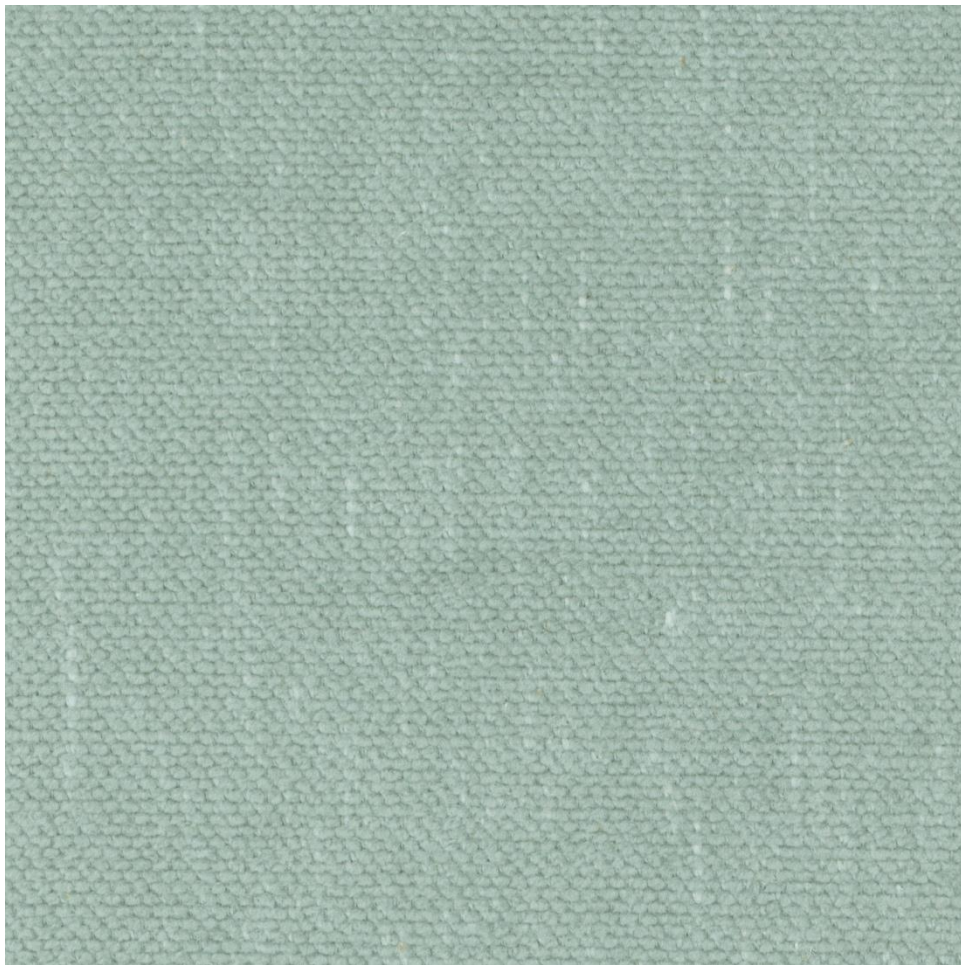
CAT. NO. 1502



STANDARD
100



COLOURWAYS



1502-01

SUITABLE FOR: Upholstery & Soft Upholstery  

COMPOSITION: 84% Poly, 16% Cotton

WIDTH: 140 CMS (+/- 5 CMS)

WEIGHT: 352 GSM

DESIGN REPEAT: VERTICAL: Nil ; HORIZONTAL: Nil

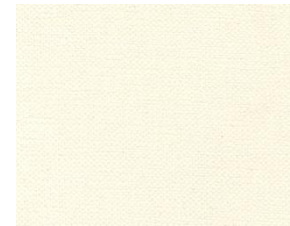
MARTINDALE: < 30,000 Rubs

WASH CARE:    

(Machine wash at cold. Gentle cycle. Tumble dry low. Do not bleach. Dry clean.)



1502-04



1502-06



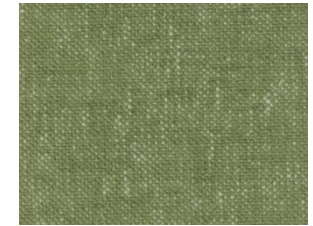
1502-10



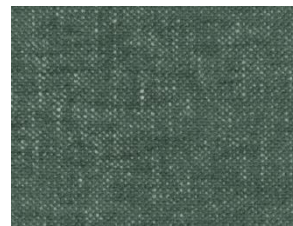
1502-12



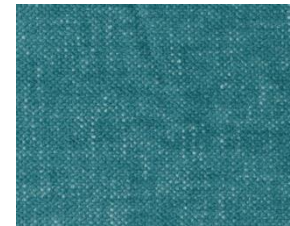
1502-14



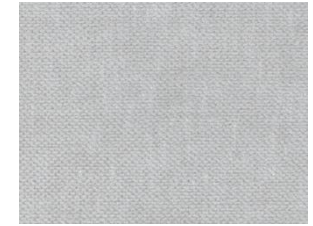
1502-16



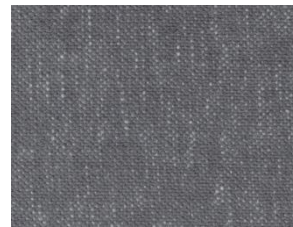
1502-18



1502-20



1502-22



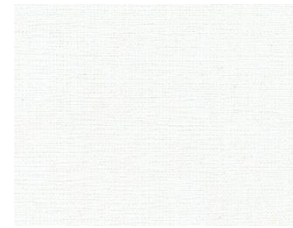
1502-26

*Colour shades may tend to vary between different dye-lots & production batches.
*Due to variations in computer screens, images presented are not 100% similar to actual fabrics.

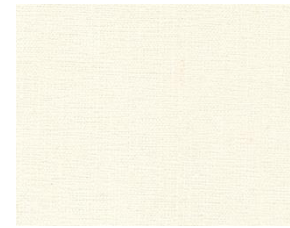
COLOURWAYS



1502-02



1502-05



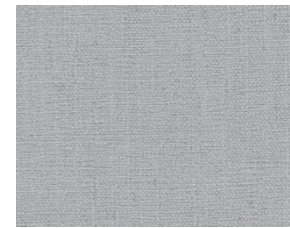
1502-07



1502-08



1502-17



1502-23



1502-27

SUITABLE FOR: Upholstery & Soft Upholstery  

COMPOSITION: 92% Poly, 8% Linen

WIDTH: 140 CMS (+/- 5 CMS)

WEIGHT: 405 GSM

DESIGN REPEAT: VERTICAL: Nil ; HORIZONTAL: Nil

MARTINDALE: < 30,000 Rubs

WASH CARE:    

(Machine wash at cold. Gentle cycle. Tumble dry low. Do not bleach. Dry clean.)

*Colour shades may tend to vary between different dye-lots & production batches.

*Due to variations in computer screens, images presented are not 100% similar to actual fabrics.

COLOURWAYS



1502-03

SUITABLE FOR: Upholstery & Soft Upholstery  

COMPOSITION: Polyester Rayon Natural Fibre

WIDTH: 140 CMS (+/- 5 CMS)

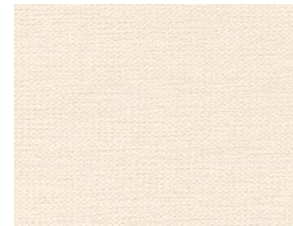
WEIGHT: 385 GSM

DESIGN REPEAT: VERTICAL: Nil ; HORIZONTAL: Nil

MARTINDALE: < 30,000 Rubs

WASH CARE:    

(Machine wash at cold. Gentle cycle. Tumble dry low. Do not bleach. Dry clean.)



1502-09



1502-11



1502-13



1502-15



1502-19



1502-21



1502-24



1502-25



1502-28



1502-29



1502-30

*Colour shades may tend to vary between different dye-lots & production batches.
*Due to variations in computer screens, images presented are not 100% similar to actual fabrics.



VALUE WEAVES

by ULTRA FABRICS®

Unit 262, Dubai Textile City
Al Warsan 1, Dubai, UAE

Follow our socials
@ultrafabrics.ae
   

www.valueweaves.ae