



# GLEAM

CAT NO. 1504



STANDARD  
100



COLOURWAYS



1504-01



1504-07



1504-13



1504-19



1504-25

**SUITABLE FOR:** Drapery & Soft Upholstery  

**COMPOSITION:** 51% Poly, 49% Cotton

**WIDTH:** 140 CMS (+/- 5 CMS)

**WEIGHT:** 250 GSM

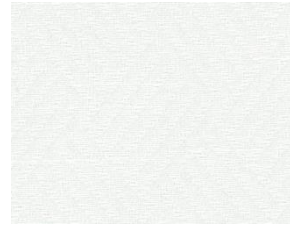
**VERTICAL DESIGN REPEAT:** 3.5 CMS

**HORIZONTAL DESIGN REPEAT:** 3.5 CMS

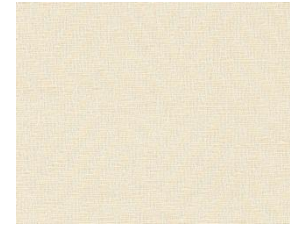
**WASH CARE:**         (Dry clean only.)

\*Colour shades may tend to vary between different dye-lots & production batches.  
\*Due to variations in computer screens, images presented are not 100% similar to actual fabrics.

COLOURWAYS



1504-08



1504-14



1504-20



1504-26



1504-02

**SUITABLE FOR:** Drapery & Soft Upholstery  

**COMPOSITION:** 51% Poly, 49% Cotton

**WIDTH:** 140 CMS (+/- 5 CMS)

**WEIGHT:** 250 GSM

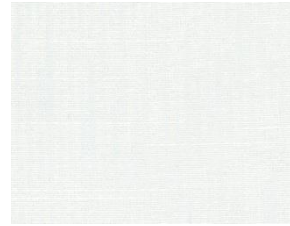
**VERTICAL DESIGN REPEAT:** 5.7 CMS

**HORIZONTAL DESIGN REPEAT:** 4.3 CMS

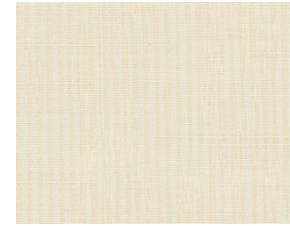
**WASH CARE:**      (Dry clean only.)

\*Colour shades may tend to vary between different dye-lots & production batches.  
\*Due to variations in computer screens, images presented are not 100% similar to actual fabrics.

COLOURWAYS



1504-09



1504-15



1504-21



1504-27



1504-03

**SUITABLE FOR:** Drapery & Soft Upholstery  

**COMPOSITION:** 51% Poly, 49% Cotton

**WIDTH:** 140 CMS (+/- 5 CMS)

**WEIGHT:** 250 GSM

**VERTICAL DESIGN REPEAT:** Nil

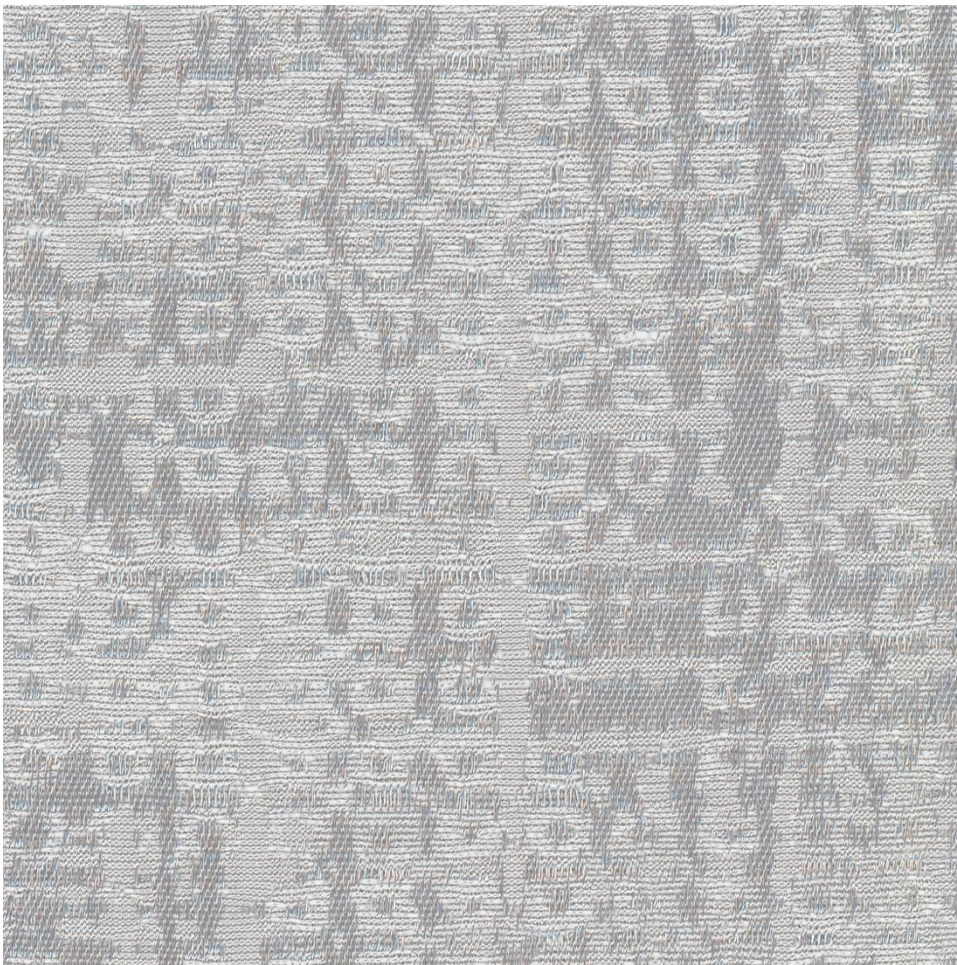
**HORIZONTAL DESIGN REPEAT:** Nil

**WASH CARE:**      (Dry clean only.)

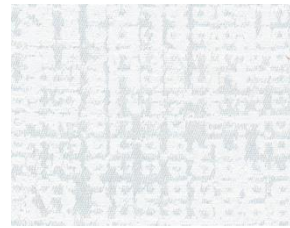
\*Colour shades may tend to vary between different dye-lots & production batches.  
\*Due to variations in computer screens, images presented are not 100% similar to actual fabrics.



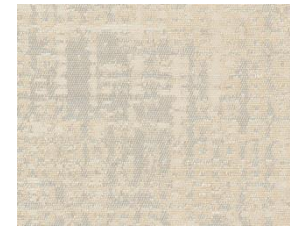
COLOURWAYS



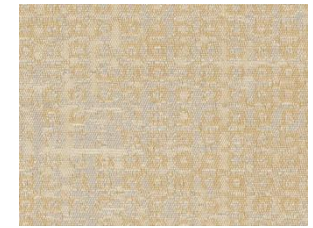
1504-04



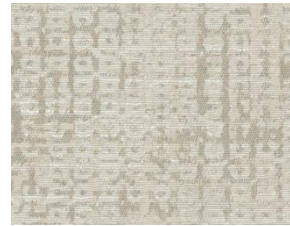
1504-10



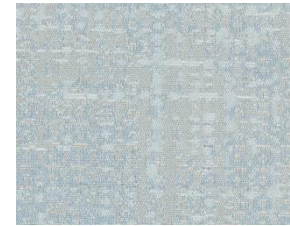
1504-16



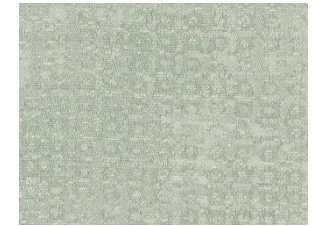
1504-22



1504-28



1504-31



1504-33

**SUITABLE FOR:** Drapery & Soft Upholstery  

**COMPOSITION:** 51% Poly, 49% Cotton

**WIDTH:** 140 CMS (+/- 5 CMS)

**WEIGHT:** 250 GSM

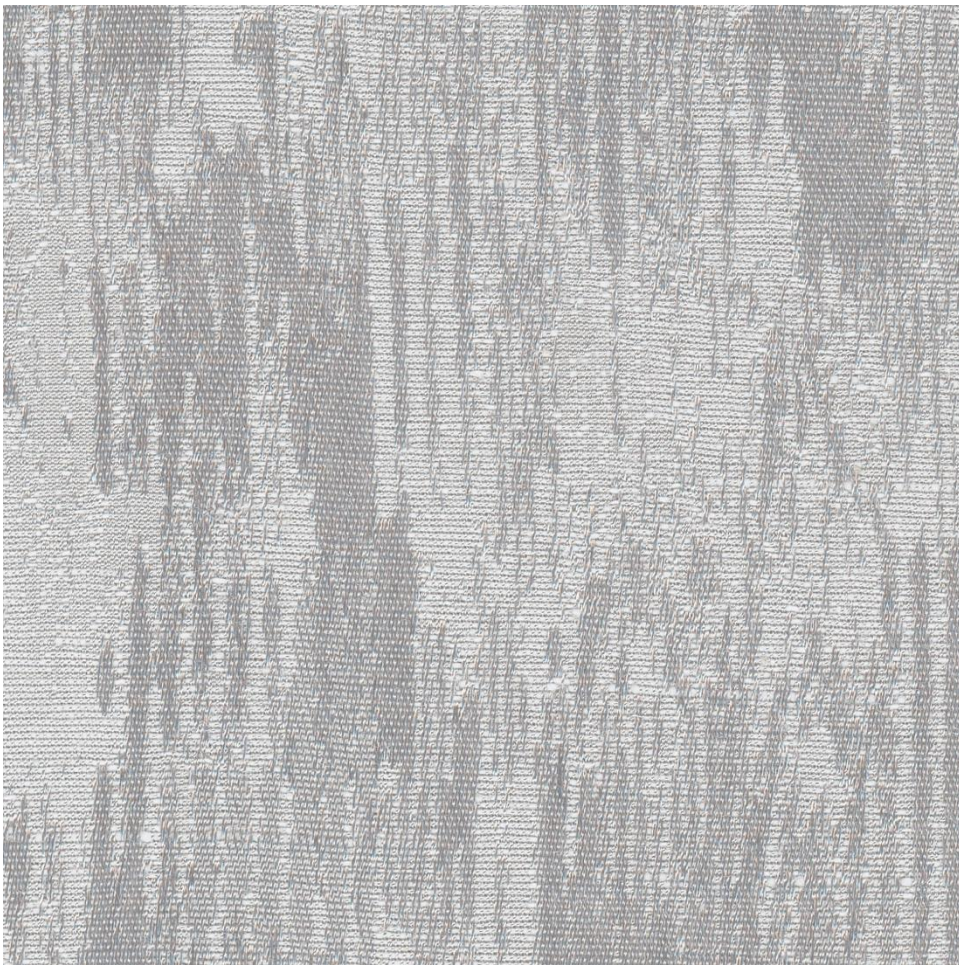
**VERTICAL DESIGN REPEAT:** Nil

**HORIZONTAL DESIGN REPEAT:** Nil

**WASH CARE:**      (Dry clean only.)

\*Colour shades may tend to vary between different dye-lots & production batches.  
\*Due to variations in computer screens, images presented are not 100% similar to actual fabrics.

COLOURWAYS



1504-05



1504-11



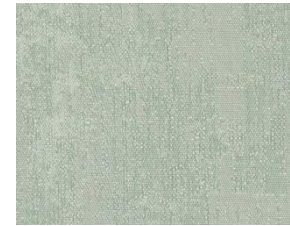
1504-17



1504-23



1504-29



1504-34

**SUITABLE FOR:** Drapery & Soft Upholstery  

**COMPOSITION:** 51% Poly, 49% Cotton

**WIDTH:** 140 CMS (+/- 5 CMS)

**WEIGHT:** 250 GSM

**VERTICAL DESIGN REPEAT:** Nil

**HORIZONTAL DESIGN REPEAT:** Nil

**WASH CARE:**       (Dry clean only.)

\*Colour shades may tend to vary between different dye-lots & production batches.  
\*Due to variations in computer screens, images presented are not 100% similar to actual fabrics.

COLOURWAYS



1504-06



1504-12



1504-18



1504-24



1504-30



1504-32

**SUITABLE FOR:** Drapery & Soft Upholstery  

**COMPOSITION:** 51% Poly, 49% Cotton

**WIDTH:** 140 CMS (+/- 5 CMS)

**WEIGHT:** 250 GSM

**VERTICAL DESIGN REPEAT:** Nil

**HORIZONTAL DESIGN REPEAT:** Nil

**WASH CARE:**      (Dry clean only.)

\*Colour shades may tend to vary between different dye-lots & production batches.  
\*Due to variations in computer screens, images presented are not 100% similar to actual fabrics.

# VALUE WEAVES

by ULTRA FABRICS®

Unit 262, Dubai Textile City  
Al Warsan 1, Dubai, UAE

Follow our socials  
@ultrafabrics.ae  
   

[www.valueweaves.ae](http://www.valueweaves.ae)